

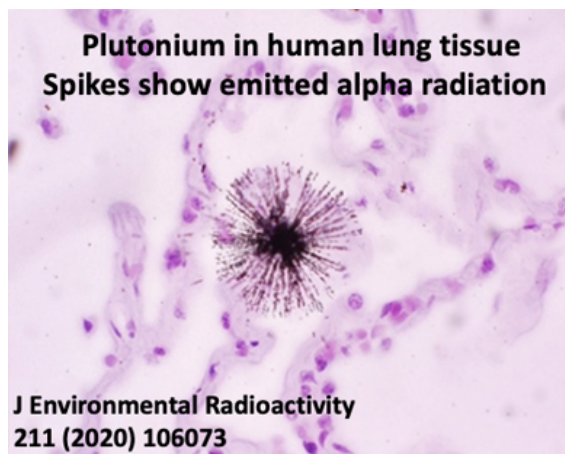
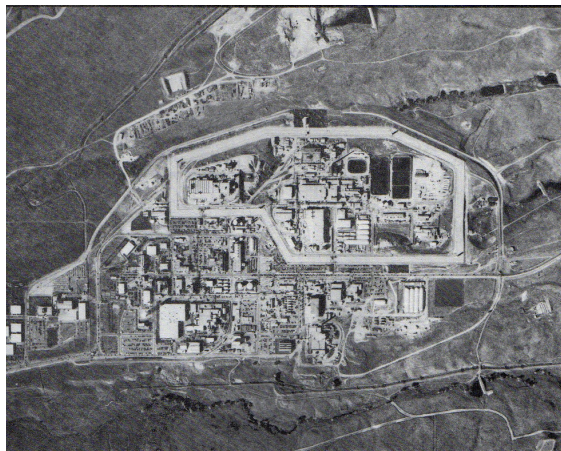


Symposium on Rocky Flats: Impacts on the Environment and Health

April 23, 2022
8:00am – 5:00pm

Virtual Event with in-person option in Superior, CO
CME credits available for Physicians

From 1952 until 1989 the Rocky Flats Nuclear Weapons Plant in Colorado produced plutonium triggers for atomic weapons. After closing in 1992, a cleanup of the production area was undertaken and it is now a Superfund Site. The surrounding buffer zone, not remediated, is now a Wildlife Refuge with trails open to the public.



This Symposium will span topics ranging from the history of Rocky Flats, contamination issues still plaguing the area, legal issues, critical analyses of epidemiological studies, and effects of radiation on the genome and epigenome.

We welcome everyone to register, including community members whose lives may have been touched by Rocky Flats, medical and health professionals, scientists, decision makers and all interested persons. See program and registration below.

This Symposium is presented as a full-day webinar with an in-person option in Superior, CO. CME Credits are available for physicians.

Registration for Virtual Webinar via Zoom:

This symposium will be presented as a full-day webinar via Zoom.

You can register at: tinyurl.com/psr-rfsym

Or scan the QR Code to the right



Registration for In-Person Gathering in Superior, CO:

For those who live in the area, you are invited to leave your computers at home and join us at the Superior Community Center in Superior, CO to view the Symposium as a virtual Zoom webinar together as a community as it is streamed onto large projection screens. Following this there will be a reception. **If you are interested in joining us in Superior, please register at tinyurl.com/psr-ipsym** or scan the QR code to the right.



Registration for CME Credits:

The Colorado Medical Society is accredited by the ACCME to provide continuing medical education for health professionals. The Colorado Medical Society designates this live activity for a maximum of 6.75 AMA PRA Category 1 Credits™. Fee for CME credits is \$235.50.

If you are seeking CME credits, registration is a two-step process. In addition to registering for this event (either virtual or in-person), **you must register for CME credits at this link: tinyurl.com/mrxbnrZj** or by scanning the QR code to the right.



For more information, visit: psrcolorado.org/symposium-on-rocky-flats-2022

This Symposium is brought to you by PSR Colorado (Physicians for Social Responsibility, Colorado Chapter) and The Colorado Medical Society and made possible by member support and a generous grant from a donor advised fund at RSF Social Finance.



Sasha Stiles, MD, MPH.

Chair, Organizing Committee for the
Symposium on Rocky Flats
Immediate Past Chair, PSR Colorado



Kristen Iversen, PhD

Professor of English and Creative
Writing, University of Cincinnati
Author of Full Body Burden: Growing Up
in the Shadow of Rocky Flats and Doom
with a View



Ted Zeigler

Former Chairman, Toxic and Hazardous
Waste Materials Committee, Rocky Flats
Nuclear Waste Facility



Michael E. Ketterer, PhD

Professor Emeritus of Chemistry and
Biochemistry, Northern Arizona University



Randy Stafford

Senior Manager, Oracle America, Inc
Former member, Jefferson Parkway
Advisory Committee
Contributor to Kristen Iversen's book
Doom with a View



Doug Young

Policy Analyst on environmental issues
for elected officials, non-profits, and
land management organizations



Patrick Quinn

Former four-term Mayor of the City and
County of Broomfield.



Patricia A. Mellen, Esq

Environmental and Property Litigator,
Pat Mellen Law, LLC



Randall M. Weiner

Weiner and Cording, a law firm that has
represented citizens and citizen groups
on Rocky Flats Issues



Stephanie Carroll

Authorized Representative under the
Energy Employees Occupational Illness
Compensation Program Act



Mark B. Johnson, MD, MPH

President, Colorado Medical Society
Former Executive Director, Jefferson County
Public Health Department



Cindy Folkers

Radiation and Health Hazard Specialist,
Beyond Nuclear



Edward N. Granados, PhD

Former Principal Investigator, Abbott
Laboratories



Susan M. Bailey, PhD

Professor of Environmental &
Radiological Health Sciences, Colorado
State University



Igor Koturbash, MD, PhD

Associate Professor and Chair,
Department of Environmental and
Occupational Health, University of
Arkansas for Medical Sciences



Yuri E. Dubrova, PhD, DrSci

Y.E.D.: Professor of Genetics, University of
Leicester, UK



Sharon Montes, MD

Chair, PSR Colorado